

# Department of English Language & Literature

ORIENTATION FOR NEW STUDENTS

11:45 – 13:00 28 AUGUST 2023

# Speakers

- ▶ Prof. Peter Storey, Head of Department
- ▶ Prof. Edward Wen, Interim Head of Department
- ▶ Dr Rebekah Bale, Literature Coordinator
- ▶ Dr Benjamin Freudenberg, Cultural Studies Coordinator
- ▶ Dr Ivy Wong, Linguistics Coordinator
- ▶ Dr Liu Jian Wen, Kacey, Translation Coordinator
- ▶ Dr Maria Chan, Departmental Industrial Attachment Coordinator

# The Bachelor of Arts with Honours in English

AIMS AND PILOS



# Programme Aims

- ▶ To strengthen productive skills in written and spoken English;
- ▶ To provide broad educational exposure which encourages bilingual competence and multicultural sensitivity and development;
- ▶ To stimulate intellectual growth through providing an educationally generalist programme;
- ▶ To encourage student exploration of cultural heritages through critical analyses of English language and literatures in English;
- ▶ To initiate students to adopt an interdisciplinary approach to knowledge in the hybrid, web-like and complex 21st century.

# Programme Intended Learning Outcomes

**Upon successful completion of the programme, students should be able to:**

1. communicate effectively using spoken and written English;
2. demonstrate a knowledge of the psychological and social developments in English language study and their application to translation studies;
3. display broadening intellectual growth;
4. demonstrate a sound knowledge of literatures in English, their historical contexts, multiple genres and their production;
5. exhibit a sensitivity to interdisciplinary and intercultural aspects of the study of English language and literature.

# Overall Programme Structure: Core and Elective

Year One		Year Three	
	Core Courses		Core Courses
	Elective Courses		Elective Courses
Year Two		Year Four	
	Core Courses		Core Courses
	Elective Courses		Elective Courses

## University Requirements

General Education  
(12 credits)

(Chinese) Language Requirement  
(8 credits)

## Concentrations:

Linguistics & Translation

Literary & Cultural Studies

Education Concentration

## Optional: a Minor (15 credits)

Accounting, Business Admin, Chinese, FinTech, History, Journalism & Mass Com<sup>n</sup>, Psychology, Social Work, Sociology

# Bachelor of Arts with Honours in English

## Courses Offered

### 2023-2024

First Year			1st Term	2nd Term
<b>Language Requirement</b>			<b>8 credits</b>	
CHI	101-2	First Year Chinese I & II	4	4
<b>Department Core Requirement</b>			<b>20 credits</b>	
ENG	101-2	English Skills I & II	3	3
ENG	120	Introduction to Literature	-	3
ENG	140	Introduction to Translation	-	3
ENG	153	Introduction to Cultural Studies	3	-
ENG	160	Introduction to Linguistics	3	-
ENG	181-2	Oral English I & II (Tutorial)	1	1
<b>Department Electives</b>			<b>3 credits</b>	
ENG	184	Women's Writing & Feminist Readings	-	3
ENG	185	Greek and Roman Mythology in Western Literature	3	-
<b>General Education</b>			<b>6 credits</b>	
<b>Free Electives</b>			<b>0 credits</b>	
			<b>Total: 37 credits</b>	

# Bachelor of Arts with Honours in English

## Courses Offered

### 2023-2024

Second Year				
			1st Term	2nd Term
<b>Department Core Requirement</b>			<b>15 credits</b>	
ENG	233	<i>The Language of Poetry</i>	3	-
ENG	234	<i>City Culture and H.K. Urbanscape</i>	-	3
ENG	240	<i>Literary Translation</i>	-	3
ENG	250	<i>Sociolinguistics</i>	3	-
ENG	260	<i>Academic Writing</i>	3	-
<b>Department Electives</b>			<b>6 credits</b>	
ENG	213	<i>Commercial Translation</i>	3	-
ENG	214	<i>Exploring English Grammar</i>	3	-
ENG	270	<i>Discourse Analysis</i>	-	3
ENG	273	<i>Children's Literature</i>	-	3
ENG	283	<i>Literature and Film</i>	3	-
ENG	285	<i>Work Placement</i>	-	3
<b>General Education</b>			<b>6 credits</b>	
<b>Free Electives</b>			<b>6 credits</b>	
			<b>Total: 33 credits</b>	



# Year Two Entry

## Bachelor of Arts with Honours in English Courses Offered 2023-2024

			1st Term	2nd Term
<b>Language Requirement</b>			<b>4 credits</b>	
CHI	102	First Year Chinese II	-	4
<b>Department Core Requirement</b>			<b>15 credits</b>	
ENG	233	The Language of Poetry	3	-
ENG	234	City Culture and H.K. Urbanscape	-	3
ENG	240	Literary Translation	-	3
ENG	250	Sociolinguistics	3	-
ENG	260	Academic Writing	3	-
<b>Department Electives</b>			<b>6 credits</b>	
ENG	213	Commercial Translation	3	-
ENG	214	Exploring English Grammar	3	-
ENG	270	Discourse Analysis	-	3
ENG	273	Children's Literature	-	3
ENG	283	Literature and Film	3	-
ENG	285	Work Placement	-	3
<b>Free Electives</b>			<b>6 credits</b>	
			<b>Total: 31 credits</b>	

# Bachelor of Arts with Honours in English

## Courses Offered

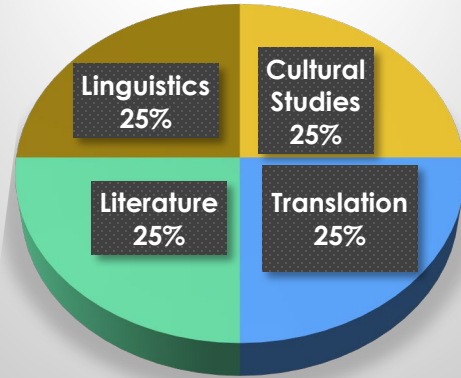
### 2023-2024

Third Year				
			1st Term	2nd Term
<b>Department Core Requirement</b>			<b>12 credits</b>	
ENG	305	Technoscience Culture	-	3
ENG	320	Critical Analysis of Drama	3	-
ENG	340	Interpreting I	3	-
ENG	350	Psycholinguistics		
<b>Department Electives</b>				
ENG	330	Gender, Language and Translation		
ENG	388	American Literature		
ENG	360	Work Placement (Education)		
ENG	361	Pedagogical Grammar		
ENG	364	Second Language Acquisition		
ENG	385	Shakespeare		
<b>Free Electives</b>				

Fourth Year				
			1st Term	2nd Term
<b>Department Core Requirement</b>			<b>12 credits</b>	
ENG	406	Literature, Culture and Ecological Ethics	-	3
ENG	409	Interdisciplinary Approach to English Studies	-	3
ENG	440	Translation and Globalization	3	-
ENG.	450	Phonological Studies in World Englishes	-	3
<b>Department Electives</b>			<b>9 credits</b>	
ENG	410	Linguistic Approaches to Translation	3	-
ENG	460	Contemporary Literature	-	3
ENG	485	Victorian Literature and Society	3	-
ENG	486	Issues in Pragmatics	-	3
ENG	489	Visual Culture Studies	3	-
ENG	490	Honours Project	-	3
<b>Free Electives</b>			<b>3 credits</b>	
			<b>Total: 24 credits</b>	

The minimum number of credits required for graduation is 124.

# Curriculum



Skills

Literature

Cultural Studies

Linguistics

Translation

Interdisciplinary

ENG410  
Linguistic  
approaches to  
translation

ENG409  
Interdisciplinary  
Approaches to  
English Studies

# First Year Study

English Skills I &  
II

Oral English I  
& II

Introduction  
to Literature

Introduction  
to Cultural  
Studies

Introduction  
to Linguistics

Introduction  
to Translation

2  
Departmental  
Electives

Chinese  
Language

2 GE Courses



# First Year Study - Second Year Entry

The Language  
of Poetry

City Culture  
and HK  
Urbanscape

Literary  
Translation

2  
Departmental  
Electives

Academic  
Writing

First Year  
Chinese II

2  
Free Elective  
Courses

# LITERATURE

COORDINATOR:  
DR REBEKAH BALE



► What kinds of texts will I study in my literature courses?

► Is there a link between these courses and others in the department?

► How about other disciplines?

# Year One

## Core

☑ 120 Introduction to Literature

## Electives

☐ 184 Women's Writing and Feminist Readings

☐ 185 Greek & Roman Mythology in Western Literature



# Year TWO

## Core

✓ 233 The Language of Poetry

## Electives

- 273 Children's Literature
- 274 Modernist Fiction
- 283 Literature and Film
- 284 Modern Drama

# Year THREE

## Core

☒ 320 Critical Analysis of Drama

## Electives

☐ 385 Shakespeare

☐ 386 Renaissance Literature & English Society 1516-1667

☐ 388 American Literature

# Year FOUR

## Core

- ☒ 406 Literature, Culture and Ecological Ethics
- ☒ 409 Interdisciplinary Approach to English Studies

## Electives

- ☐ 460 Contemporary Literature
- ☐ 479 Science Fiction in Literature and Film
- ☐ 480 Special Topic
- ☐ 484 Romantics and Romantic Skeptics
- ☐ 485 Victorian Literature and Society
- ☐ 490 Honours Project

# critical thinking ↔ critical linking

- ★ discipline to discipline
- ★ text to text
- ★ culture to culture
- ★ text to experience



# CULTURAL STUDIES

COORDINATOR:  
DR. BENJAMIN FREUDENBERG

# Courses in the Cultural Studies Stream

---

Introduction to Cultural Studies

---

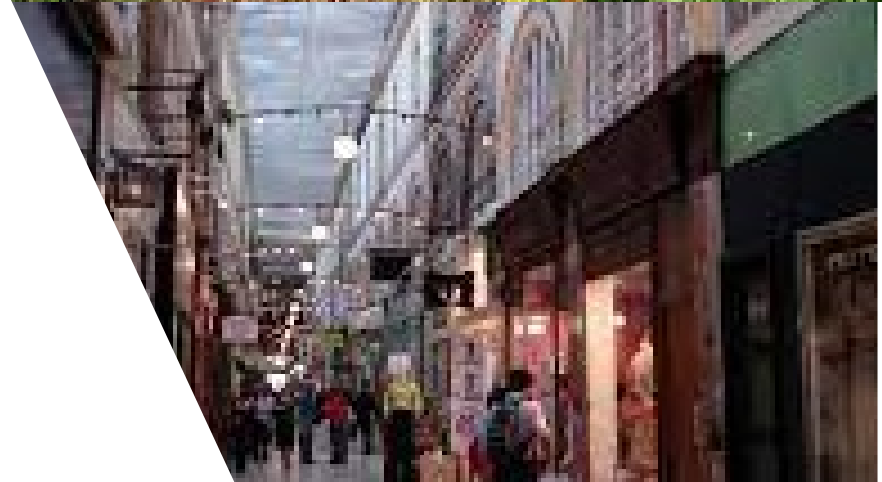
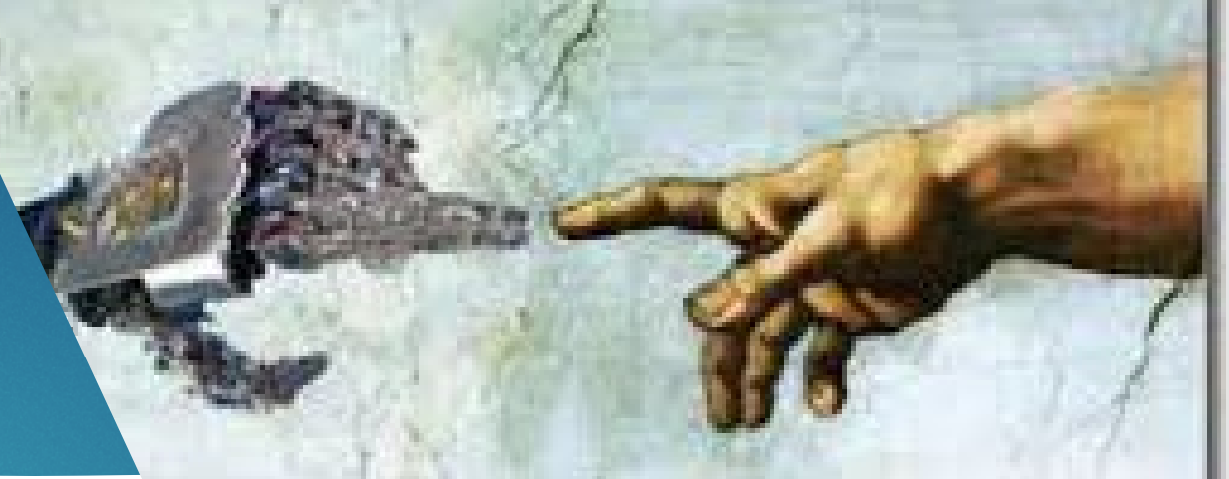
City Culture and H.K.  
Urbanscape

---

Technoscience Culture

---

Literature, Culture and  
Ecological Ethics



# Courses in the Cultural Studies Stream

Literature and Film

Popular Culture

Travel and Culture

Science Fiction in Literature and Films

Visual Culture Studies



A Companion to  
**Literature  
and Film**



# Courses in the Cultural Studies Stream

Introduction to Cultural Studies

City Culture and H.K. Urbanscape

Technoscience Culture

Literature, Culture and Ecological Ethics

Literature and Film

Popular Culture

Travel and Culture

Science Fiction in Literature and Films

Visual Culture Studies

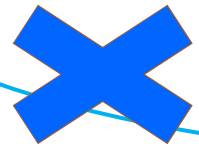
Honours Project



# LINGUISTICS

COORDINATOR:  
DR IVY WONG

# What linguistics is (not)



How many languages do you speak?



Studying linguistics:

- ▶  $\neq$  speaking as many languages as we can
- ▶ = *working with languages & learning about languages*

# What linguistics is

- ▶ The scientific study of language
  - ▶ Systematic methods of investigation
  - ▶ Observe & analyse features & patterns within/across languages
  - ▶ E.g. speech sounds, grammatical structures, word meanings
  - ▶ To understand how language works



lĩŋ.'gwi.stiks

fireman/firewoman



firefighter

salesman/saleswoman



salesperson



# What linguists study

words

sentences

speech  
sounds

pronunciation

accents

writing systems

old languages

language  
change

dialects

effective  
communication

language  
contact

ineffective  
communication

language  
processing

language  
variation

new ways of  
communication

language  
acquisition

...

# Linguistics courses in BA English programme

Year	Core courses	Electives
1	<p>ENG160 Introduction to Linguistics</p> <p>Syntax, semantics, phonetics, phonology, morphology, pragmatics</p>	
2	<p>ENG250 Sociolinguistics</p> <p>Relationship between humans, language and society</p>	<p>ENG270 Discourse Analysis</p> <p>How we use language to communicate different meanings in different social contexts</p>
		<p>ENG214 Exploring English Grammar</p> <p>Linguistic concepts for describing and analysing the form and function of English grammatical structures</p>



# Linguistics courses in the BA English programme

Year	Core courses	Electives
3	<p>ENG350 Psycholinguistics</p> <p>How language is acquired, represented and processed in the brain</p>	<p>ENG364 Second Language Acquisition</p> <p>The processes of learning / acquiring a language</p>
		<p>ENG381 The Sound System of English</p> <p>Speech production, pronunciation, IPA, phonological rules</p>
4	<p>ENG450 Phonological Studies in World Englishes</p> <p>Sound patterns of English varieties spoken across the world</p>	<p>ENG410 Linguistic Approaches to Translation</p> <p>The use of linguistic theory in the process and practice of translation</p>
		<p>ENG486 Issues in Pragmatics</p> <p>Language in real-world contexts of communication</p>
		<p>ENG490 Honours Project</p> <p>Independent research project</p>

# A few resources to get you started

- ▶ Crystal, D. (2010). *A little book of language*. Yale University Press.
- ▶ Matthews, P.H. (2003). *Linguistics: A very short introduction*. OUP.
- ▶ Yule, G. (2010). *The study of language*. CUP.
- ▶ <http://talkthetalkpodcast.com> : A weekly podcast / chat show from Australia hosted by linguists who talk on a variety of topics in language and linguistics. E.g.:
  - ▶ Gendered pronouns
  - ▶ The language of emotion
  - ▶ Kinship terms
  - ▶ Language and thought
  - ▶ Digital communication and emoji usages

# TRANSLATION

COORDINATOR:  
DR LIU JIANWEN, KACEY

# Translation

Year of Study	Core Courses	Elective Courses	
<b>1</b>	ENG140 Introduction to Translation		
<b>2</b>	ENG240 Literary Translation	ENG213 Commercial Translation	
<b>3</b>	ENG340 Interpreting I	ENG330 Gender, Language and Translation	ENG387 Media Translation
<b>4</b>	ENG440 Translation and Globalization	ENG366 Interpreting II	ENG410 Linguistic Approaches to Translation
			ENG487 Contemporary Translation Theory and Its Applications
			ENG490 Honours Project

# Concentrations

YEAR 3 & 4



# Concentration in Literary and Cultural Studies

- ▶ Students have to complete any five of the following courses in the upper division (at least 2 courses from each strand) to declare a concentration:

# Concentration in Literary and Cultural Studies

## Literature

**ENG 385 Shakespeare**

**ENG386 Renaissance Literature and the English Society, 1516-1667**

**ENG388 American Literature**

**ENG460 Contemporary Literature**

**ENG484 Romantics and Romantic Sceptics**

**ENG485 Victorian Literature and Society**

**ENG480 Special Topic in Literature**

## Cultural Studies

**ENG335 Popular Culture**

**ENG389 Travel and Culture**

**ENG479 Science Fiction in Literature and Films**

**ENG489 Visual Culture Studies**

# Concentration in Linguistics and Translation Studies

- ▶ Students have to complete any five of the following courses in the upper division (at least 2 courses from each strand) to declare a concentration:

# Concentration in Linguistics and Translation Studies

## Linguistics

**ENG364 Second Language Acquisition**

**ENG381 The Sound System of English**

**ENG410 Linguistics Approaches to Translation**

**ENG480 Issues in Pragmatics**

## Translation

**ENG330 Gender, Language & Translation**

**ENG366 Interpreting II**

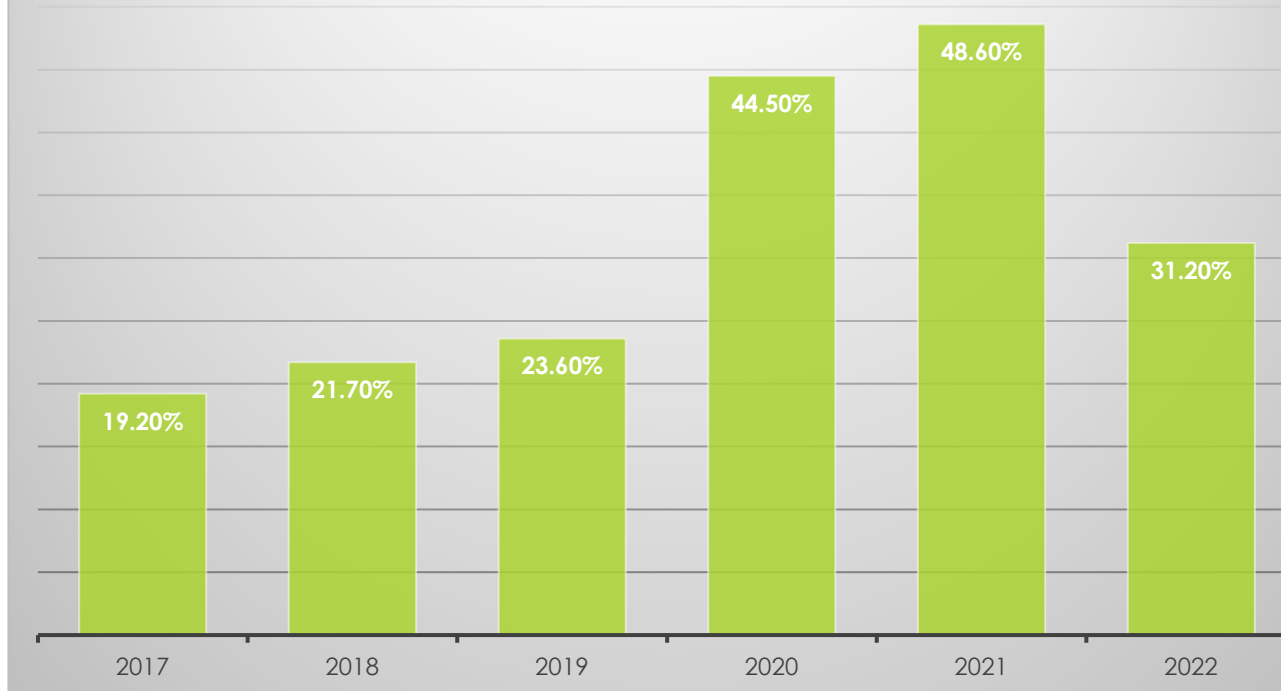
**ENG387 Media Translation**

**ENG410 Linguistics Approaches to Translation**

**ENG487 Contemporary Translation Theory and Its Applications**

# HKSYU Graduate Employment Survey data

## Employed in the education sector






# Qualified Teacher Status in Hong Kong

All new English teachers in Hong Kong schools are required to:

- be trained graduates
- fulfill the Language Proficiency Requirement



<https://www.edb.gov.hk/en/teacher/qualification-training-development/qualification/teacher-training-qualifications/index.html>



香港樹仁大學  
HONG KONG SHUE YAN UNIVERSITY

Department of  
English Language And Literature

Language Courses8 credits

Departmental Core courses59 credits

Departmental Electives30 credits

General Education courses12 credits

Free Electives15 credits

TOTAL124 credits

About Us

News & Events

Undergraduate Study

Postgraduate Study

Student's Life

Resources

Apply Now


Free electives

The 15 Free Elective credits can be used to complete a [Minor](#) in another subject such as *Accounting, Business Administration, Economics, Finance, Psychology, Sociology, Social Work, Chinese Language & Literature, History, and Journalism & Mass Communication.*

Education Bureau Recognition

The BA (Hons) in English is recognised by the Education Bureau as a **Language Major degree** providing relevant subject knowledge exempting graduates from the written papers of the **Language Proficiency Assessment (LPR) for Teachers of English**. Graduates who wish to pursue a career in English language teaching should complete a Postgraduate Diploma in Education (PGDE) programme majoring in English within three years of taking up employment as an English teacher in order to be fully exempted from the LPR and fully qualified as a teacher.

- Being a trained graduate
- Fulfilling the Language Proficiency Requirement



香港樹仁大學  
HONG KONG SHUE YAN UNIVERSITY

Contact Us

Tel: (852) 2570 7110  
Fax: (852) 2806 8044  
Email: [english@hksyu.edu](mailto:english@hksyu.edu)  
  
Contact details

Find Us

Department of English  
Faculty of Arts  
Hong Kong Shue Yan University  
Wai Tsui Crescent  
North Point  
Hong Kong

## Education Bureau Recognition

BA (Hons) in English - recognised by EDB as a **Language Major degree** exempting graduates from the written papers of the **Language Proficiency Assessment for Teachers of English**.

Graduates who wish to pursue a career in English language teaching should **complete a Postgraduate Diploma in Education (PGDE) programme majoring in English within three years of taking up employment** as an English teacher in order to be fully exempted from the LPR and fully qualified as a teacher.



## Education Concentration in English

The Education Concentration in English was offered for the first time in 2022 and is open to Year Three students in September. This new concentration is designed to cater to students who are considering pursuing a career in education after graduation.

The concentration contains four different types of course:

- A departmental core course
- A school-based Work Placement course
- Departmental Electives
- Inter-departmental electives.

### **Concentration Intended Learning Outcomes:**

Upon completion of the Education Concentration in English, students should be able to:

- analyze issues related to the teaching of English at school level;
- design pedagogical applications of English subject content suitable for school level learners, and
- demonstrate awareness of the needs of school level learners in acquiring competence in English.

### **Departmental Core course (3 credits):**

ENG364 Second Language Acquisition

### **Work Placement course (3 credits):**

ENG360 Work Placement (**Education**)

### **Departmental Electives 3-6 credits (choose at least one course):**

ENG381 The Sound System of English

ENG361 Pedagogical Grammar

ENG460 Contemporary Literature

ENG486 Issues in Pragmatics

ENG361 Pedagogical Grammar


### **Inter-Departmental Electives 3-6 credits (choose at least one course)**

PSY307 Educational Psychology

HIST467 History of Education in Hong Kong 香港教育史

IDP401 Digital Technology in Teaching

SOC313 Sociology of Education

- 
- A successfully completed concentration will be mentioned on your final transcripts, but not on the graduation certificate.
  - If you are interested in completing a concentration, you need to start enrolling in relevant courses in August 2023.
  - Before this, it would be helpful if you could *declare your interest* in the concentration by informing Ms Frankie Fung, Administrative Assistant serving the Department of English Language and Literature, by email at [fykfung@hksyu.edu](mailto:fykfung@hksyu.edu).
  - Students who declare an interest in the concentration will be given priority in enrolling in the courses.

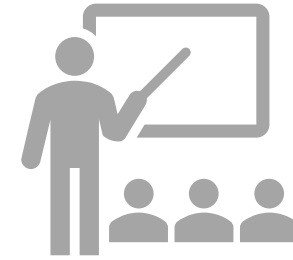


# Education Concentration in English



**Will NOT**

qualify you to teach English in schools



**Will**

signal to employers and PGDE providers  
that you are motivated and prepared to  
become a teacher

# Other Features

- ▶ Industrial Attachment
  - ▶ **Dr Maria Chan**
- ▶ International Exchange

# Industrial Attachment

- ▶ ENG 285 Work Placement
- ▶ ENG 360 Work Placement (Education)

# ENG 285 Work Placement

## Elective course for 2nd and 3rd-year students

- ▶ Types of organizations students have worked with:
  - Translation agencies
  - Educational institutions
  - NGOs
- ▶ Positive feedback from workplace supervisors:
  - Hard work
  - Eagerness to learn
  - Cooperation
  - Language and analytical skills

# ENG 285 Work Placement

- ▶ Overseas internships available in the summer
- ▶ Broadening horizons, cross-cultural communication skills



# ENG 360 Work Placement (Education)

- ▶ Focus on internships in schools
- ▶ Feedback from workplace supervisors:
  - Enthusiasm, dedication

# Supervision & Requirements

- ▶ Dual supervision:
  - Workplace supervisor and academic supervisor
- ▶ Requirements:
  - Reflective journal and final report

# Profile Enrichment

- ▶ Importance of enriching your profile:
  - Stand out to employers
- ▶ Suggestions for profile enrichment:
  - Additional skills, volunteer work

# Support from the Industrial Attachment Office

- ▶ workshops, scholarships, resources
- ▶ RLB501, Research Complex

# Graduation Requirement

Categories	Credits
Core Courses	59
Departmental Electives	30
Language Requirement	8
General Education Programme	12
Free Electives	15
<b>TOTAL</b>	<b>124</b>

Please check the English Department website for more information: <https://english.hksyu.edu/>



# Graduation Requirement – Year Two Entry

Categories	Credits
Core Courses	39
Departmental Electives	27
Language Requirement	4
General Education Programme	0
Free Electives	17
<b>TOTAL</b>	<b>87</b>

Please check the English Department website for more information: <https://english.hksyu.edu/>

# Plagiarism and Academic Misconduct Policy

**Please read Appendix 5 of  
the Student Handbook.**

# Examples of Plagiarism

- ▶ Submitting a paper or major portions of a paper that has been previously submitted for another class without permission of the current instructor
- ▶ Turning in written assignments that are not your own work (including homework)
- ▶ Failing to give credit for ideas and material taken from others
- ▶ Representing another's artistic or scholarly work as one's own

# English Department Course Regulations

1. Leave of Absence
2. Plagiarism and Academic Misconduct
  - Late submission of Course Work
  - Plagiarism



# **1. Leave of Absence**

1.1 Applications for sick leave from classes, supported by a valid medical certificate from a registered doctor in original form or in certified true copy, must be submitted to individual course lecturer(s) in advance or immediately after the date of absence. If multiple leave applications are required, students are reminded to bring the original medical certificate to the Information Office at the G/F of Academic Main Building for certification of their photocopies as true copies.



## **1. Leave of Absence (cont.)**

- 1.2 Applications for sick leave from examinations, supported by a valid medical certificate from a registered doctor in original form together with application for make-up examination, should be submitted to Registry for approval within three days of the examination.

## **1. Leave of Absence (cont.)**

1.3 Application for leave due to serious illness or other extenuating circumstances should be submitted in writing to the lecturer(s) concerned or to Registry in advance for approval. A student who is on approved leave with a cumulative number of days' leave over one third of the total period of a course in a given semester will be barred from taking the examination and will be required to repeat the course.

## **1. Leave of Absence (cont.)**

- 1.4 A student who has been absent for one-third of the classes in a course (including sick leave) will be barred from the examination and receive a grade F for the course; if there is no final examination for the course, the student will be awarded an F for the course.
- 1.5 Lateness of more than 15 minutes in a period will be counted as absence for one hour.



## **2. Plagiarism and Academic Misconduct Policy**

### **2.1 Late Submission of Course Work**

Students are required to submit their course work by the deadline specified by the course instructor. Late submission will result in penalties. No submission will be entertained two weeks before the deadline of grade submission specified in the Academic Calendar.



## 2.2 Plagiarism

Where there is an allegation of academic misconduct, the matter may be considered and determined by the course examiner responsible for the work in question, the Board of Examiners, the Head of Department responsible for the course in question acting as Chair of the Board of Examiners, or the Student Discipline Committee; subject to the qualification that the penalties that can be imposed by those individuals or those bodies are as set out in the Student Handbook. Where the Head of Department considers that the matter is sufficiently serious, he may refer the allegation to the Senior Registrar for consideration by the Student Discipline Committee.

The student shall be given a reasonable opportunity to respond to an allegation of academic misconduct before any determination is made or penalty imposed.





## **Penalties for academic misconduct:**

- i. A reprimand and warning.
- ii. A requirement to resubmit the work in question [no more than a minimum pass can be given for any resubmitted work].
- iii. Marks deducted or no marks given for the work in question.
- iv. A fail grade entered for the course involving the work in question.
- v. Suspension of the student from the University for a specified period.
- vi. Expulsion of the student from the University.
- vii. Non-award of the degree for which the student has been studying.

# Meet Your Mentors



Mentor	Students
Dr. Michelle Chan	NI, PANHUI   SHI, ZIJIE
	CHENG, HOLLY
	TAM, CHING NGA
Dr. Thomas Chan	LI, YUTU   LI, KA HO
	MOK, KIT HIM
	YU, HUAIYUAN
Dr. Maria Chan	CHAN, MAN CHING
	MOHAMMAD, BIBI MAMOONA
	TANG, HUNG YUEN
	LIN, CHING YEE   NG, WAI YIN
	LEE, ADA KA WAI
Dr. Benjamin Freudenberg	LIU, ZHUORU
	LUI, CHEUK LAM CHARLENE
	HO, NOK CHING
Dr. Winnie Zeng	LAM, SHING HON
	CHENG, WING LAM
	LAM, YICK SAN
	KOK, HIU KI
	WENG, KAIXUN

Mentor	Students
Dr. Marjorie Cheung	LI, ZAI QING
	ZHANG, QIQI
	LAM, TSZ HO
Dr. Grace Leung	ZHANG, ZHIHUI
Dr. Jenny Wan	JIANG, ZIJUN
	LUO, XIZHE
	ZHONG, XINYI
	LIN, YINING
Prof. Edward Wen	LI, CHENGJIN
	HE, JIAXIN
	DENG, WEIYU
Dr. Kacey Liu	ZHENG, SIMIN
	DU, ANXIN
	LI, JIANXIN
	YE, SHANGXI
	GOU, JIE
Dr. Rebekah Bale	MA, JUNKAI